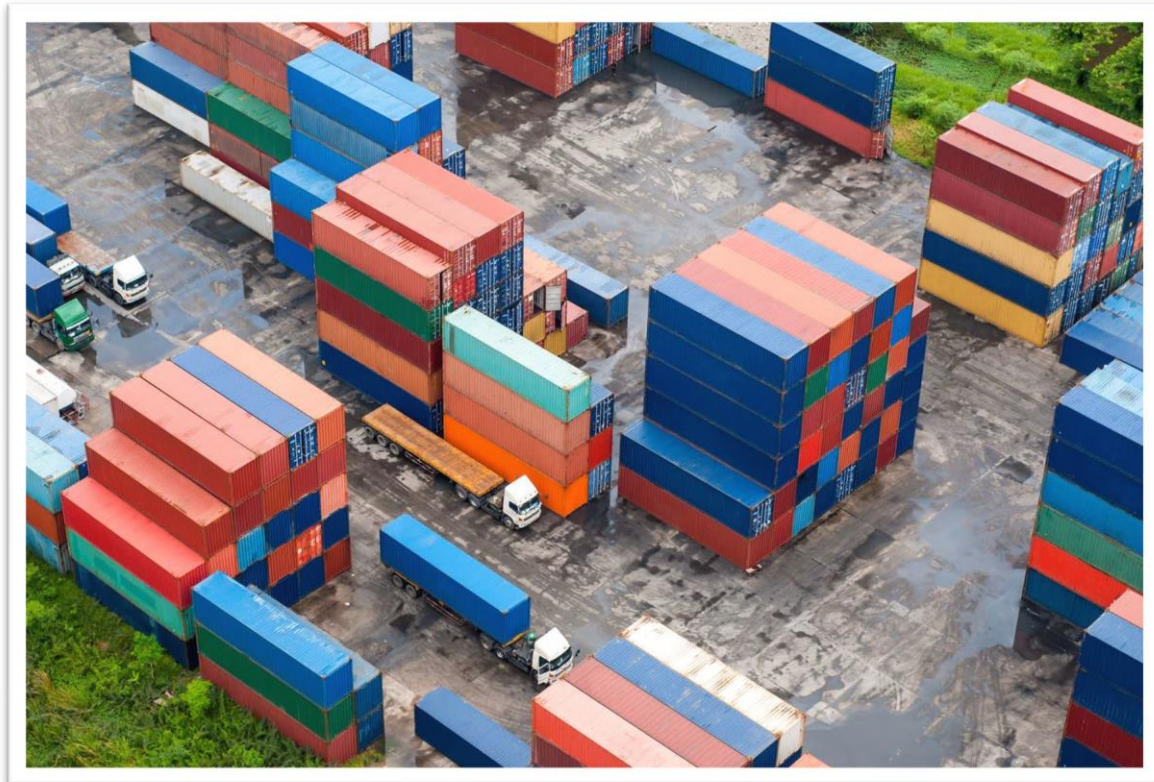


Aliyah Shipping Guide: Preparing for your Lift



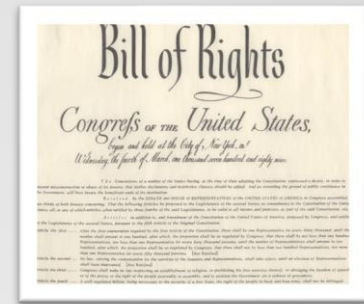
Challenges

- Put your possessions in the right hands
- Find a shipper who gives you:
 - ✓ Support and service
 - ✓ Clear, complete quotes
 - ✓ Excellent service from start to finish
 - ✓ Timely, accurate information and prices



Our Advice

- Educate yourself about shipping
- Consult former Olim—review recommendations
- Choose an Israel-based shipper focused on Aliyah—not on commercial shipping.
- Get a full breakdown of all possible charges
- Plan - don't wait for the last minute



Tax Rights

No Taxes not value added, sales, or customs

Olim & Returning Minors 3 shipments in 3 years

Returning Residents 2 " " 9 months

Full taxes

Israelis, tourists, students

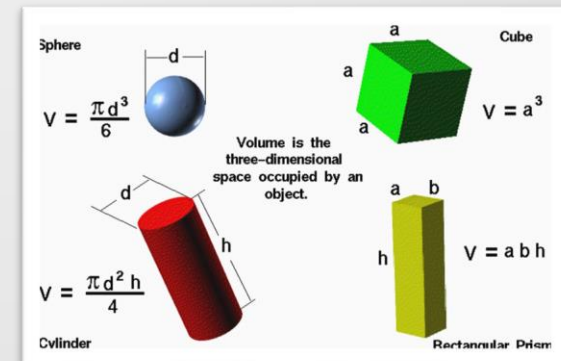
Built-in goods, 2nd appliances, 4th TV's/computers

Personal quantities food, whisky, 1 new gas bbq

Never weapons, seeds, electric bikes/scooters

Volume & Weight

- Volume (cubic feet, cft.) is the main cost factor
- Weight (cwt, 100 lbs.) is primary in some places
- The bigger the shipment
 - The lower the rate—33% lower at double the size
 - Less space taken by crates and pallets
 - Easier to pack efficiently



Types of Shipment

- **FCL full container**

- *Seldom shared
Or emptied at the port

- *direct to and from the ship

- *sealed and locked

- *can be partially full

- **LCL less than container**

- *crated or palletized and wrapped

- *28 days free storage

- *emptied at the port



FCL: Exclusive Container

- Large shipments More secure
- Fast, predictable timing
- Less expensive per cubic foot
- 2-4 days free storage
- Easier to pack efficiently
- Less handling



Container Sizes



20' (FCL)
1000 cubic feet



40' (FCL)
2000 cubic
feet

Consolidations (LCL)

- Smaller shipments
- More expensive per cubic foot
- Shared container unloaded at port
- Packing/crating/palletizing adds 15-20%
- Harder to pack efficiently
- Slower, less certain timing



Consolidations (LCL)

Pallet



Liftvan



Storage at origin & destination

- **sort at origin** to store part & deliver part

free time at Israel port

FCL 2-4 days

LCL 28 days

- **monitored access storage**
to extend marine insurance



Volume Estimates

Accurate

Label & Separate goods by “A” and “B” priority lists
Same person at the estimate and the packing
Review and sign the volume estimate

Inaccurate

Small, disorganized shipments
Listening or giving instructions to the Movers
Changing your mind, forgetting or adding goods

Marine Insurance (1)

For replacement value at destination

Choose **All Risk**, which insures damage & loss and requires professional packing

Avoid Total Loss, it covers only total loss

- A fair & reliable US-based marine insurance company



Marine Insurance (2)

- Lump Sum
 - 25% discounted rate
 - Shipment valued at \$12/lb
 - List only items above \$3,000
 - Covers all items up to \$3,000 without listing
- Comprehensive Valued Inventory
 - List & estimate replacement values for all items





Cheap Quotes

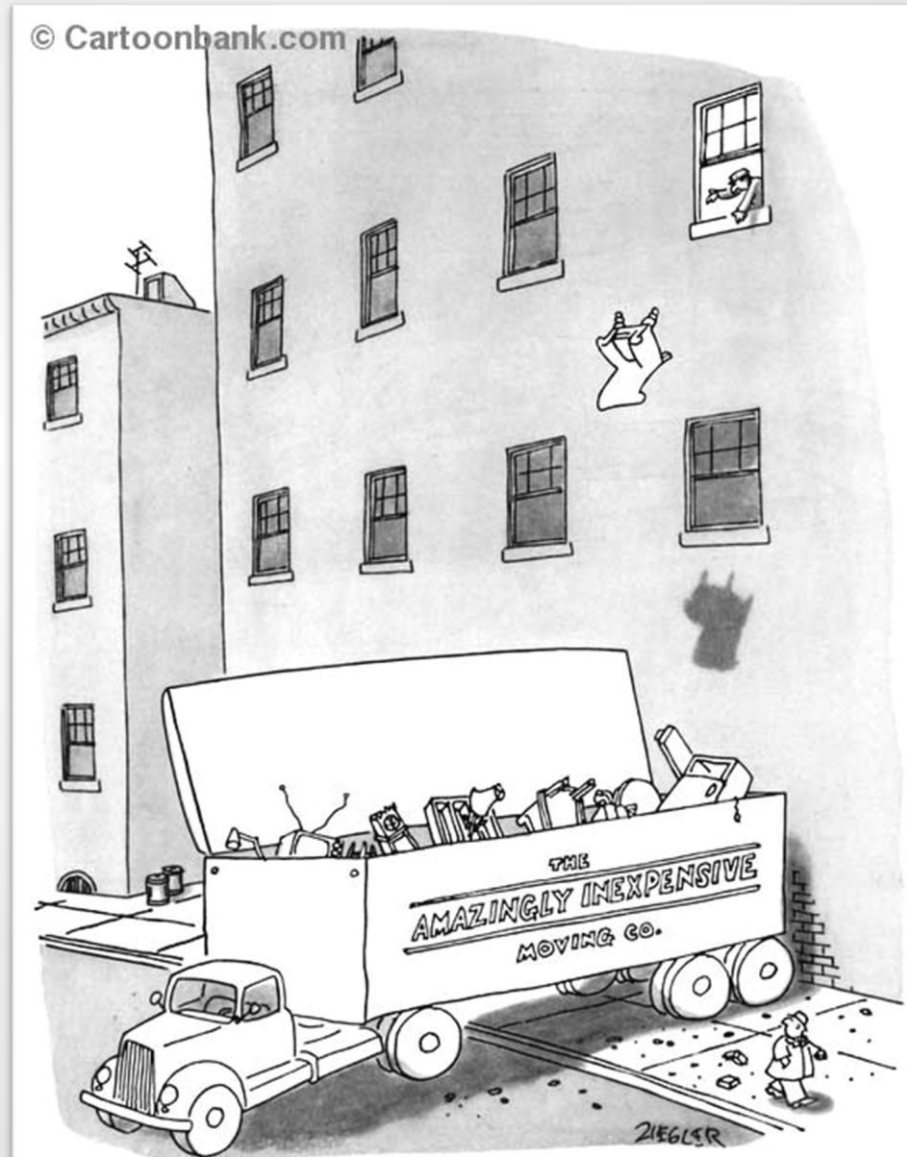
- Too good to be true

False Economies

700+ cubic feet sent as a consolidation
LCLs that are not crated or palletized
Total Loss insurance as a serious option

- **The remedy**--use a highly recommended Israel-based shipper

“The Amazingly Inexpensive Moving Company”



Bring or Buy before you ship

Things you love

furniture, artwork, sentimental items, oven,
Vitamix, Kitchen Aid, Speed Queen wash/dry

- **Furniture in Israel** limited choice & double the price
- **Buy in Israel**
European appliances



Vehicles

Why ship a vehicle?

- Save money
- Sentimental
- Some models are unavailable here

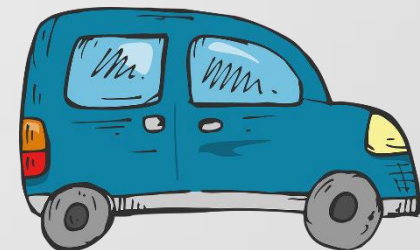
Costs of importing a car?

- Shipping, Licensing, Clearing, Inspection, Safety Changes

Age and Taxes:

- | | | |
|-------------------|-----------------|------------|
| • Oleh | no age limit | ~ 80% tax |
| • Toshav Hozer | max 4 years old | ~ 120% tax |
| • Regular citizen | max 2 years old | ~ 120% tax |

High depreciation on used cars



Packing

- **Full**, partial, or no packing
- **Professional packing**
is required to insure damage, not only loss/theft
- To pack and insure boxes **ALL RISK** including damage, let the packers inspect, seal, and mark them CP (carrier packed)

Marine Shipping

- FCLs go directly to the port for shipping and are quicker and more predictable.
- LCLs go first to warehouse for consolidation. They take longer and are less predictable.
- Longer distance from Israel = longer transit time.

Customs Clearing

- We take care of this for you.
- You do not go to Customs, except in rare cases.
- Choose a shipper who can guide you quickly and easily through the clearing process.
- Avoid surprises—use an Israel-based shipper.

Delivery

- **Movers**
- unwrap used furniture
- put goods where you want them
- discard gross debris
- assemble simple **used** furniture disassembled at origin

Difficult access = extra costs

Tell us of potential problems ASAP

Difficult Access

- Distant parking
- Elevator—absent or fragile
- Weight-limited streets or parking
- Narrow streets, stairwells, elevators, doorways

Solutions

Shuttle—transfer to smaller trucks

Long Carry—more than 25 meters

Crane—arm or ladder



Possible Extras

Storage past free days at port FCL 2-4 days LCL 28 days

Customs/Security Inspections Self-packed or from Los Angeles

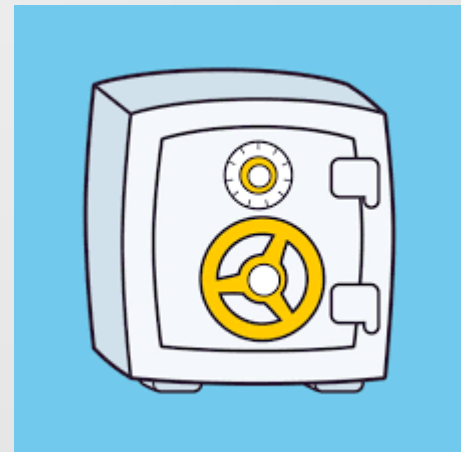
Heavy items 300+ lbs. Safe, Subzero, 50+ boxes of books

Shuttle—transfer to smaller trucks

Long Carry—more than 25 meters

Crane—arm or ladder

Stair carry above 2nd floor



The Current Situation

Delays especially from the West Coast

- Port Congestion from schedules not kept
- Crews/Trucks/Containers/Sailings suddenly unavailable

Possible Additional Fees

- Storage
- Green Fuel/Bunker Surcharge
- Congestion/Port Imbalance
- General Rate Increase from Steamship company

Comparing Quotes and getting discounts

- Happy to help you read and compare competing quotes.
- Refer a friend and get a discount

KEF INTERNATIONAL

- With you throughout the process.
- Staffed & managed by American **olim.**
- Complete, clear quotes--no hidden costs.
- Aliyah shipping since 1979.



NORTH AMERICA [+1.866.425.5224](tel:+18664255224) ext. 102

UNITED KINGDOM [+44.203.129.6901](tel:+442031296901) ext. 102

ISRAEL [+972.2.673.5043](tel:+97226735043) ext. 102

daniel@kefintl.com

www.kefintl.com